

Table 1. Frequency distribution of cases attending ART clinics (2010)

Attendance of clinics	Number	Percent
New Gynecology cases	3169	10.59
Follow up Gynecology cases	10617	35.48
U/S cases	10801	36.10
New Andrology cases	2322	7.76
Follow up Andrology	3012	10.07
Total	29923	100.0

**Table 2. Distribution of operative activity in the center
(2010)**

Activity (n =2163)	n	%
IUI	444	20.5
Oocyte retrieved	1210	55.9
Testicular TESE &PESA*	451	20.9
Cyst aspiration	58	2.7
Total	2163	100.0

***From the 451 testicular biopsies 279 (61.9%) were positive and 172 biopsies (38.1%) were negative.**

Distribution (Pie chart) of operative activity (2010)

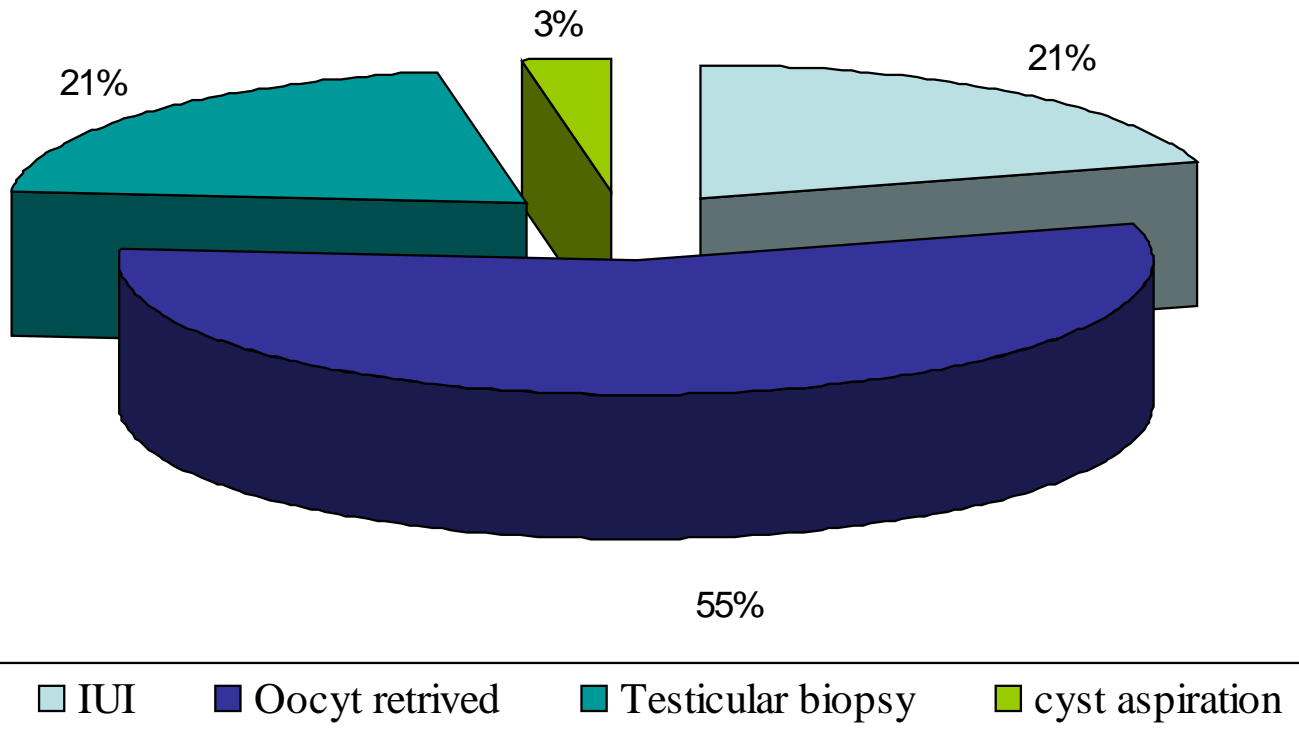


Table 3. Distribution of patients by ICSI cancellation (2010)

Cancellation* (n = 297)	n	%
Negative Tesae	172	57.9
Empty ovum	37	12.5
Negative fertilization	86	29
Failure of embryo transfer	2	0.7
Total	297	100%

Table 4. Distribution of IUI patients outcome (2010)

Outcome (n=466)	n	%
Positive pregnancy	26	5.6
Negative pregnancy	350	75.1
Not available	90	19.3
Total	466	100%

**Table 5. Distribution of ICSI patients
underwent Retrieval by outcome (2010)**

Outcome (n=1227)	n	%
Positive pregnancy	263	21.5
Negative pregnancy	834	67.9
Not available	130	10.6
Total	1227	100%

Table 6. Distribution of ICSI patients underwent Retrieval by age category (2010)

Age group (n=1227)	N	%
< 25 years	201	16.4
25 - < 30 years	383	31.2
30 - < 35 years	324	26.4
> = 35 years	297	24.2
Missed	22	1.8
Total	1227	100.0

Distribution of ICSI patients underwent Retrieval by age category (2010)

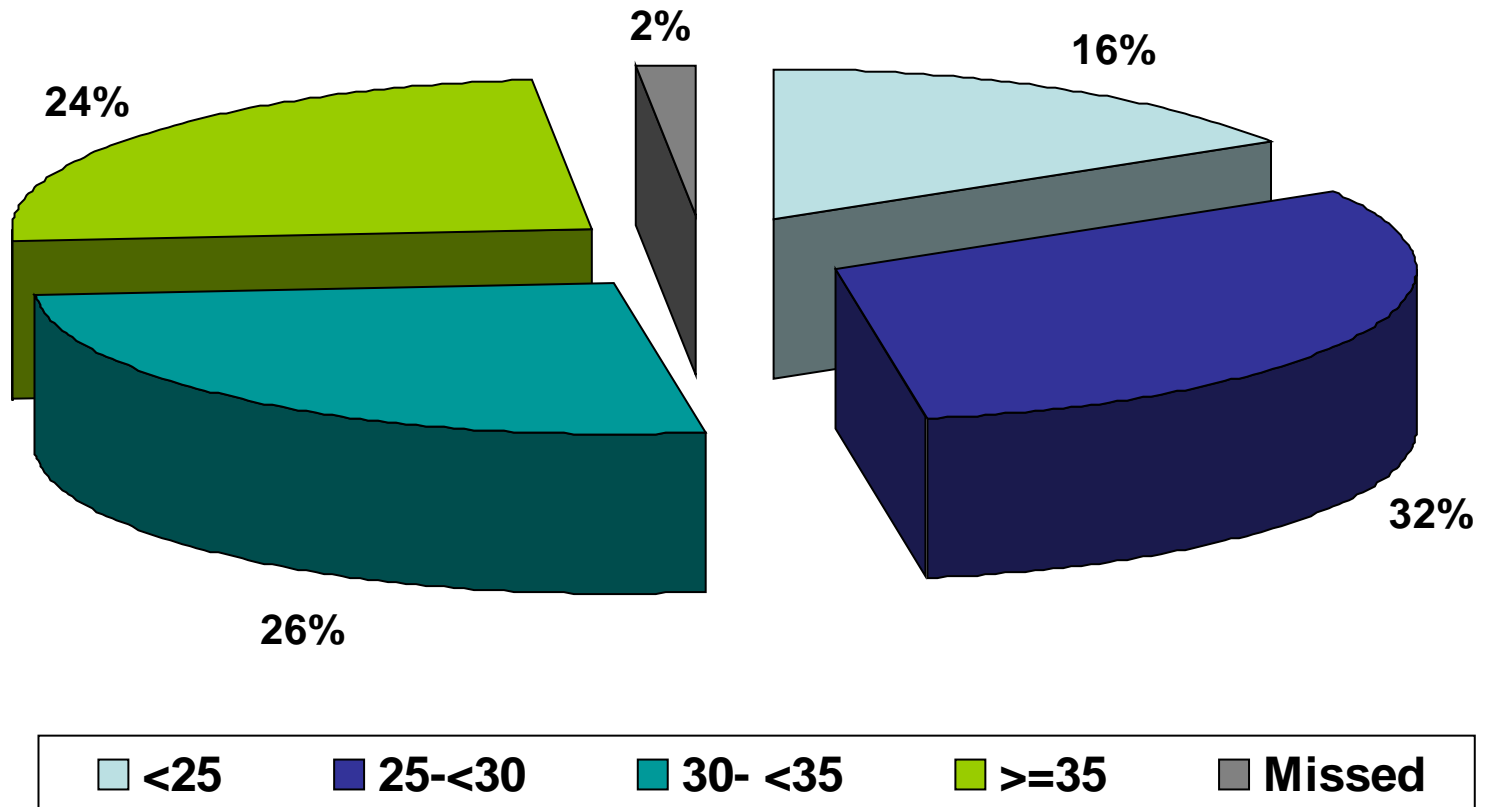


Table 7. Distribution of Retrieved patients by BMI (2010)

BMI (n =1227)	n	%
< 25 kg/m²	193	15.7
25 – < 30 kg/m²	342	27.9
>= 30 kg/m²	602	49.1
Missed	90	7.3
Total	1227	100.0

Distribution of ICSI patients underwent Retrieval (n=1227) by BMI (kg/m²) (2010)

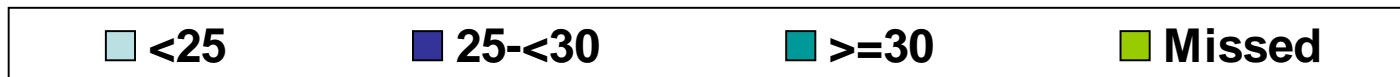
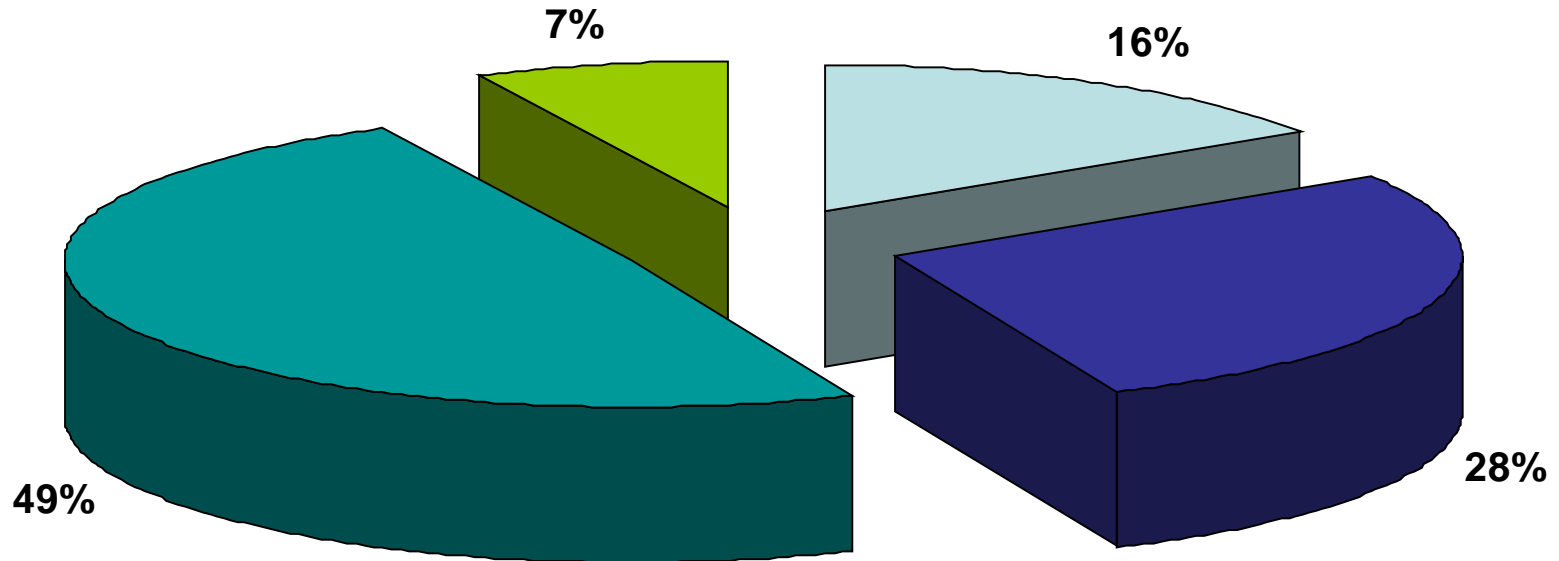


Table 8. Distribution of ICSI patients underwent Retrieval by protocol (2010)

Protocol (n =1227)	n	%
Long	832	67.8
Short	354	28.9
Missed	41	3.3
Total	1227	100.0

Distribution of ICSI patients underwent Retrieval (n=1227) by protocol (, 2010)

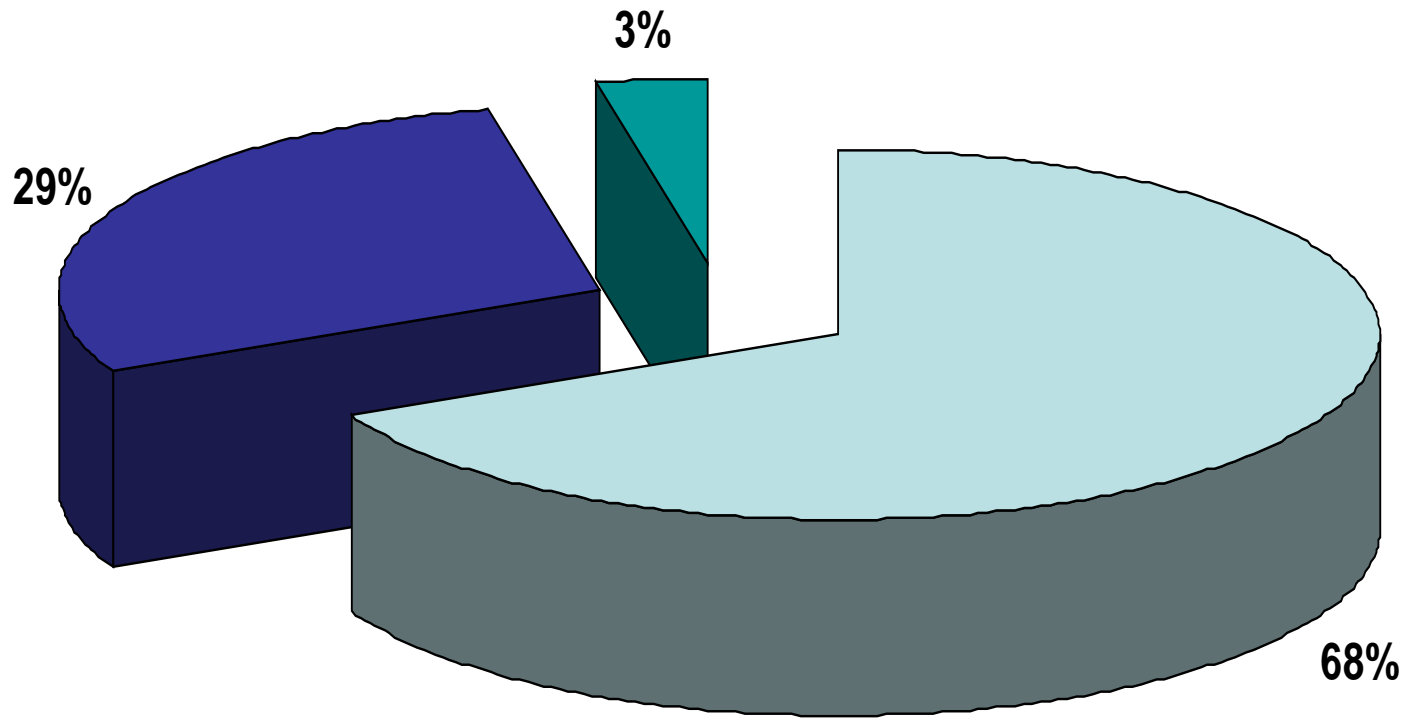


Table 9. Distribution of ICSI patients underwent Retrieval by procedure (2010)

Procedure (n =1227)	n	%
ICSI/ejaculate	968	78.9
ICSI/TESE	212	17.3
ICSI/PESA	18	1.5
IVF	2	0.2
Missed	27	2.2
Total	1227	100.0

Distribution of ICSI patients underwent Retrieval (n=1227) by procedure (2010)

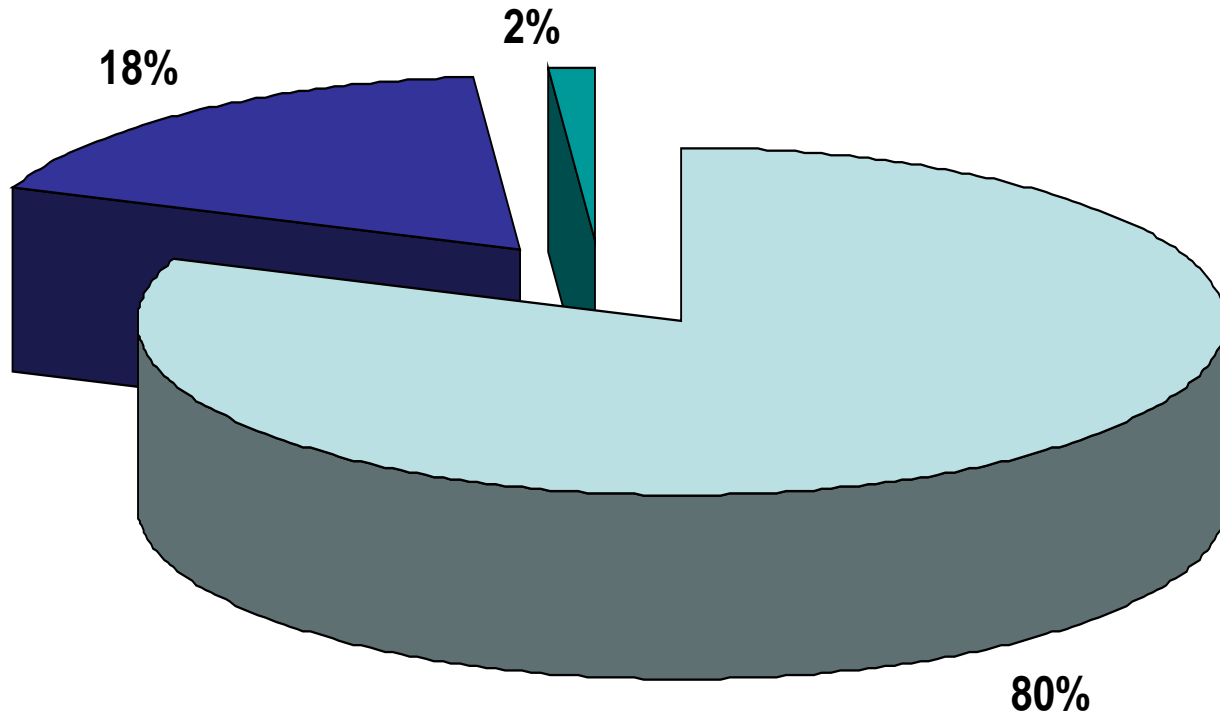


Table 10. Characteristics of ICSI patients **underwent Retrieval by some studied variables (2010)**

Variable	No. analyzed	Mean	± SD
Age (years)	1205	30.14	5.76
BMI (kg/m²)	1149	30.44	6.20
FSH	1156	6.87	4.13
LH	1151	4.95	10.75
PRL	1127	23.86	94.89
E2	1061	52.60	87.24
Number of ampoules	1365	37.65	23.60

Table 12. Fertilization percent by the embryologist (2010)

Embryologist	Number of injected ova	Number of fertilized ova	Percent of fertilization/ Embryologist
Dr. Amira	2027	1362	67.19
Dr. Eman	2688	1802	67.03
Dr. Ola	459	298	64.92
Ahmed fata	280	213	76.07
KH	54	17	31.48
Dr. Ahmed	601	396	765.89
Total	6109	4088	66.92

**Table 13. Distribution of ICSI patients
underwent ET by outcome (2010)**

Outcome of ET (n= 1104)	n	%
Positive pregnancy	263	23.8
Negative pregnancy	841	76.2
Total	1104	100%

Table 14. Frequency of outcome according to doctors performed ET (2010).

Name of doctor	Embryo transfer	Outcome	
		Pregnancy	No pregnancy
Abd El-Aal El-Ghandour	67	8	59
Adel El-said	126	38	32
Ahmed Fata	213	47	88
Ahmed Gamal	18	3	166
Ayman Nassar	9	1	15
Ahmed Roshdy	81	11	8
Eman Ahmed	56	8	70
Hassan Abdo-Rabbo	154	40	48
Hesham Mosaad	6	1	5
Hossam	20	9	11
Khaled Galal	111	27	84
Mohamed Abdel-Hady	74	24	50
Mona	44	11	33
Abdel-monsef	1	0	1
Mostafa Abdel-Hakim	22	8	13
Noha	13	2	11
Total	1104	263	481

Table 15. Distribution of pregnancy outcome (ET patients) by age categories (2010)

Age categories (years)	Positive preg. (n=263)		Negative preg. (n=819)		P. value
	No.	%	No.	%	
< 25	48	25.1	143	74.9	0.00
25-<30	112	31.3	246	68.7	
30-<35	65	22.1	229	77.9	
> = 35	38	15.9	201	84.1	

Table 16. Distribution of pregnancy outcome (ET patients) by BMI categories (2010)

BMI categories (kg/m²)	Positive preg. (n= 250)		Negative preg. (n= 54)		P. value
	No.	%	No.	%	
< 25	39	22.3	136	77.7	0.15
25-<30	88	28.4	222	71.6	
> = 30	123	22.9	415	77.1	

Table 17. Distribution of pregnancy outcome (ET patients) by protocol (2010)

Protocol	Positive preg. (n=261)		Negative preg. (n= 807)		P. value
	No.	%	No.	%	
Long	215	27.6	565	72.4	0.00
Short	46	16.0	242	84.0	

Table 18. Distribution of pregnancy outcome (ET patients) by procedure (2010)

Procedure	Positive preg. (n= 263)		Negative preg. (n= 815)		P. value
	No.	%	No.	%	
IVF	1	50	1	50	
ICSI/ejaculate	217	25.0	652	75.0	0.64
ICSI/TESE	42	21.9	150	78.1	
ICSI/PESA	3	20.0	12	80.0	